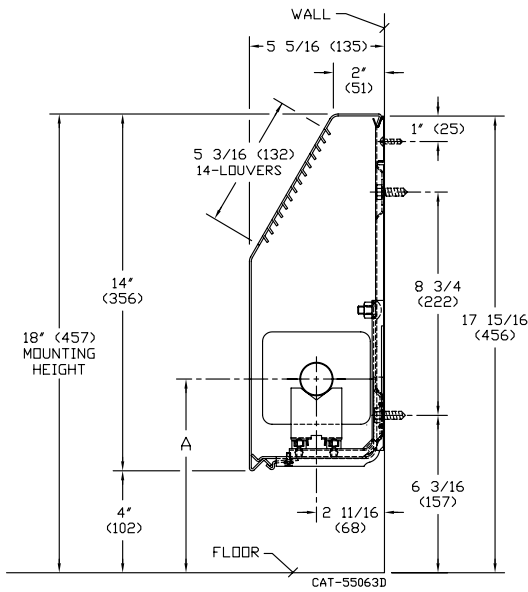




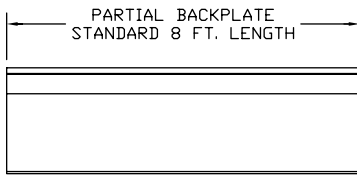
STERWYN

COMMERCIAL GRADE SLOPE TOP FINNED-TUBE ASSEMBLIES

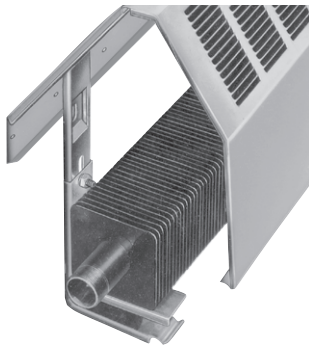
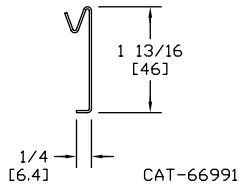




SB-14 - 16 GA.

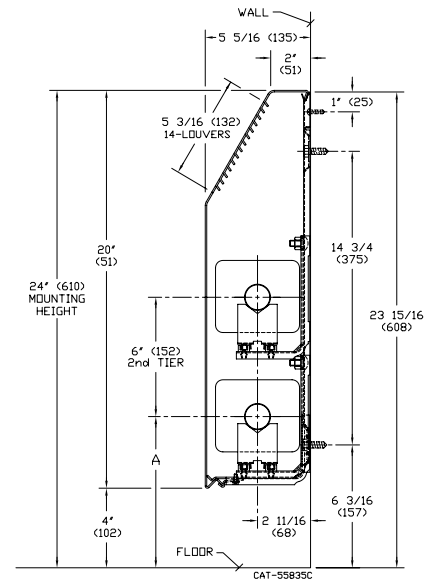


DIMENSIONS IN [] ARE SHOWN IN MILLIMETERS.



JVB-S

ELEMENT TUBE SIZE	CRADLE	A MIN.	A MAX.
3/4" COPPER	2	7-3/8	8-3/4
1" COPPER	2	7-1/2	8-7/8
1-1/4" COPPER	2	7-5/8	9
1-1/4" STEEL	2	7-7/8	9-1/4
2" STEEL	1	7-5/8	9



SB-20 - 16 GA.

***Copper/Alum Elem — Stubs 2" Flared One End
*Steel Elem — Stubs 2 1/2" W/Threaded ends (NPT)**

GUARANTEED WORKING PRESSURES

2" IPS — 405 PSI AT TEMPERATURES UP TO 650°F.
 1 1/4" IPS — 660 PSI AT TEMPERATURES UP TO 650°F.
 1 1/4" CU — 194 PSI AT TEMPERATURES UP TO 300°F.
 1" CU — 204 PSI AT TEMPERATURES UP TO 300°F.
 3/4" CU — 218 PSI AT TEMPERATURES UP TO 300°F.

- PARTIAL BACKPLATE AVAILABLE IN STANDARD 8' LENGTHS ONLY

- ELEMENTS FURNISHED IN THE FOLLOWING LENGTHS

ST-144 } 3, 4, 5, 6, 8 ft. lengths only - Steel Elements
 ST-243 }

STC-1435 } 3, 4, 5, 6, 8 ft. lengths only - Copper/Aluminum Elements

STC-435 } 3, 4, 5, 6, 8 ft.

STC-3/4 435 } 3, 4, 5, 6, 8 ft.

- SLOPING TOP ENCLOSURE STANDARD GAUGE (PRIME FINISH) = 16 GAUGE

- ENCLOSURE FURNISHED IN LENGTHS OF 2', 3', 3' 6", 4', 5', 6', 7', 8'

RATINGS • ACCESSORIES

Cover	Tube Size	Catalog Designation	Fin Size (inches)	Fin Per Ft.	Fin Thickness	Enclosure Depth & Height	Tiers & Centers	** Mtg.* Height	Steam 215° Factor 1.00	Average Hot Water Temperature °F					
										200°	190°	180°	170°	160°	150°
										Factor					
										0.86	0.78	0.69	0.61	0.53	0.45
SB-14	▶ 1 1/4" I.P.S.	ST-144	4 1/4" SQ.	40	.032" STL	14B	1	18	1500	1290	1170	1040	920	800	680
	▶ 2" I.P.S.	ST-243	4 1/4" SQ.	32	.032" STL	14B	1	18	1340	1150	1040	930	810	710	600
	▶ 3/4" CU.	STC-3/4 435	4 1/4" x 3 5/8"	50	.020" AL	14B	1	18	1840	1580	1440	1270	1120	980	830
	▶ 1" CU.	STC-435	4 1/4" x 3 5/8"	50	.020" AL	14B	1	18	1930	1660	1510	1330	1180	1020	870
	▶ 1 1/4" CU.	STC-1435	4 1/4" x 3 5/8"	50	.020" AL	14B	1	18	1860	1600	1450	1280	1130	990	840
SB-20	▶ 1 1/4" I.P.S.	ST-144	4 1/4" SQ.	40	.032" STL	20B	1	24	1600	1375	1250	1100	975	850	720
	▶ 2" I.P.S.	ST-243	4 1/4" SQ.	32	.032" STL	20B	1	24	1390	1195	1085	960	845	735	625
	▶ 3/4" CU.	STC-3/4 435	4 1/4" x 3 5/8"	50	.020" AL	20B	1	24	2090	1800	1630	1440	1270	1110	940
	▶ 1" CU.	STC-435	4 1/4" x 3 5/8"	50	.020" AL	20B	1	24	2180	1870	1700	1500	1330	1160	980
	▶ 1 1/4" CU.	STC-1435	4 1/4" x 3 5/8"	50	.020" AL	20B	1	24	2130	1830	1660	1470	1300	1130	960
SB-20	▶ 1 1/4" I.P.S.	ST-144	4 1/4" SQ.	40	.032" STL	20B	2	24	2250	1935	1755	1550	1370	1190	1010
	▶ 2" I.P.S.	ST-243	4 1/4" SQ.	32	.032" STL	20B	2	24	2000	1720	1560	1380	1220	1060	900
	▶ 3/4" CU.	STC-3/4 435	4 1/4" x 3 5/8"	50	.020" AL	20B	2	24	2820	2430	2200	1950	1720	1490	1270
	▶ 1" CU.	STC-435	4 1/4" x 3 5/8"	50	.020" AL	20B	2	24	2640	2270	2060	1820	1610	1400	1190
	▶ 1 1/4" CU.	STC-1435	4 1/4" x 3 5/8"	50	.020" AL	20B	2	24	2510	2160	1960	1730	1530	1330	1130

● The ratings above include factors shown below for recommended mounting height. Two tier ratings are based on 6" spacing between elements. Ratings are in BTU per hour lineal foot of active length. Active length is catalog ordering length less 5" on steel, less 4" for copper. ● Water ratings applicable to water flow rates of three or more feet per second have been determined by applying factors to steam ratings. ● Steel elements are painted black. ● Copper, unpainted. If the unit is to be installed at a different height than that recommended, the rating must be adjusted as follows:

▶ **Bold, italicized units are**  **rated.** ◀

RATING MULTIPLIED BY: $\frac{\text{FACTOR FROM TABLE B FOR THE ACTUAL MOUNTING HEIGHT}^*}{\text{FACTOR FROM TABLE B FOR THE RECOMMENDED MOUNTING HEIGHT}}$

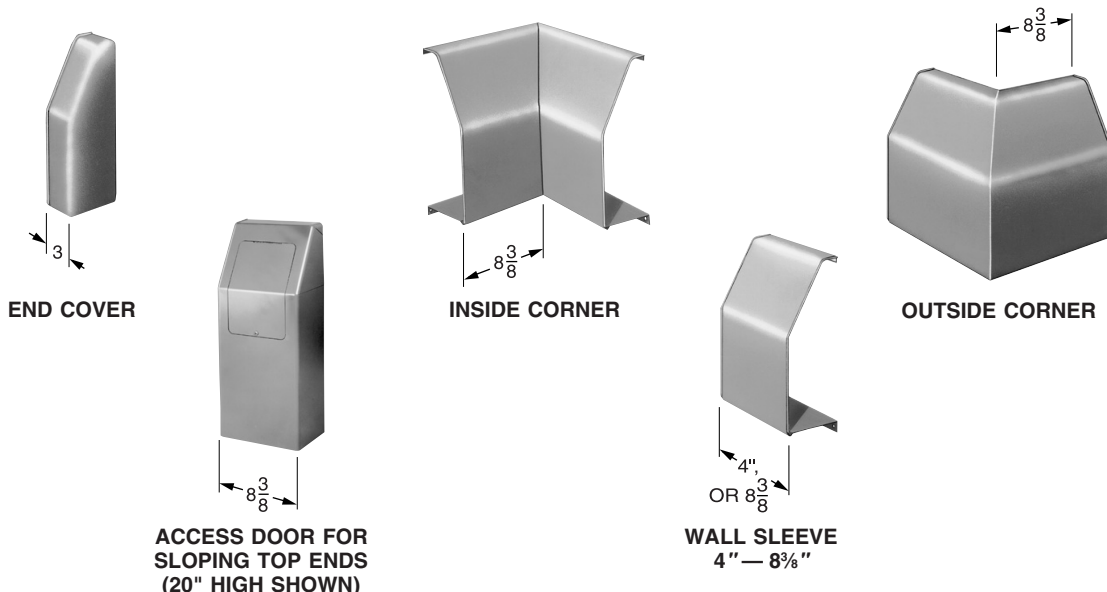
†NOTE: NPT THREADS FURNISHED ON STEEL ELEMENTS.
PLEASE USE DOMESTIC FITTINGS FOR PROPER INSTALLATION.
**MOUNTING HEIGHT IS 4" GREATER THAN ENCLOSURE HEIGHT

TABLE B

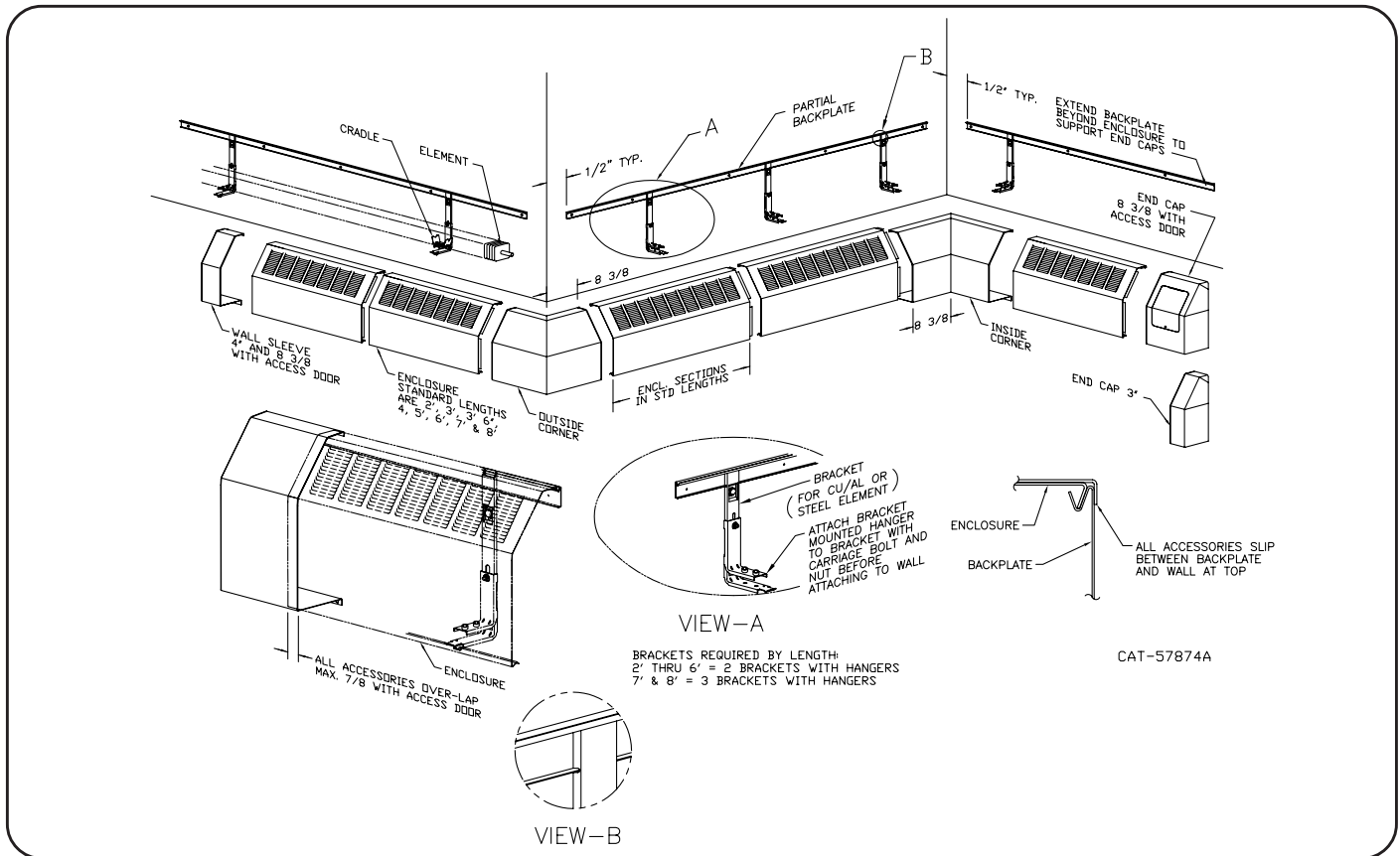
MOUNTING HGT. IN IN.	18 or less	19	20	21	22	23	24	25	26	27	28	29	30	32	34	36	38	40 or more
FACTOR 5 1/4" OFFSET	1.100	1.100	1.100	1.099	1.092	1.085	1.079	1.072	1.065	1.059	1.052	1.045	1.039	1.025	1.016	1.009	1.003	1.000

Enclosure Ordering Description "S" Sterwyn Sloping Top Enclosure, "B"-4 1/4" Fin. Size, 14" 20", Enclosure Heights.
Example: SB-14 is 4 1/4" Fin. Size, Enclosure 14" High.

ACCESSORIES



SLOPING TOP INSTALLATION AND ACCESSORY DETAILS



INSTALLATION INSTRUCTIONS

**IMPORTANT: FOLLOW INSTRUCTIONS FOR EASY INSTALLATION
PLAN AHEAD SO THE FINISHING IS SIMPLE AND CORRECT**

Installation procedure — See exploded view above. Steps required:

1. From job schedule or plan determine proper assemblies for each wall.
2. Install backplate or partial B/P at proper height and **level**. (Note: Where valve compartments occur, allow 12" for B/P or partial B/P). Start approximately 1" from corner.
3. Install wall sleeve supports, as specified.
4. **INSTALL HANGERS ON BRACKETS AS REQUIRED, BEFORE MOUNTING TO WALL.**
5. Install brackets to wall per job schedule or to a maximum 2 1/2 ft. between centers.
6. Install heating elements on cradles.
7. Install enclosures. **Start Enclosure installation** from left so enclosure joints readily join. **Where dampers are used install them in enclosures before placing enclosures on wall.** See "Damper installation sheet" packed with damper hardware.
8. Install accessories. Accessories are of the overlapping type with a bottom return to the wall. Anchor the return to the wall for a sturdy installation.



260 NORTH ELM ST. • WESTFIELD, MA 01085
TEL: (413) 568-9571 • FAX: (413) 562-8437 • www.sterlingheat.com



In the interest of product improvement, we reserve the right to make changes without notice.